

The most realistic RC simulation flight experience!

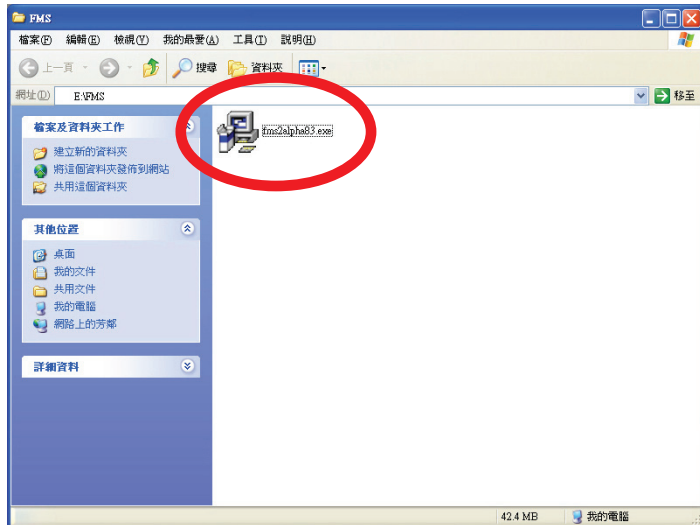


CX - 501

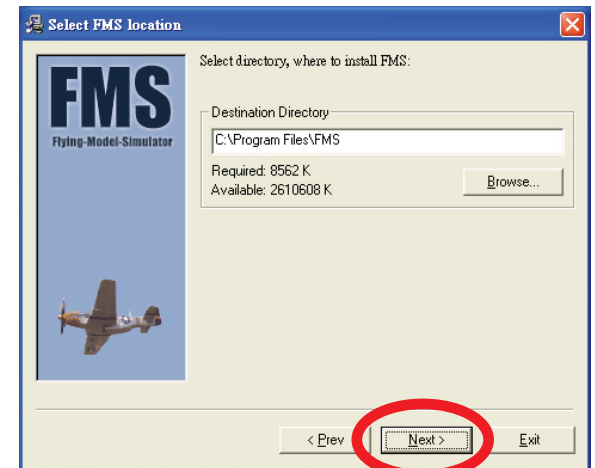
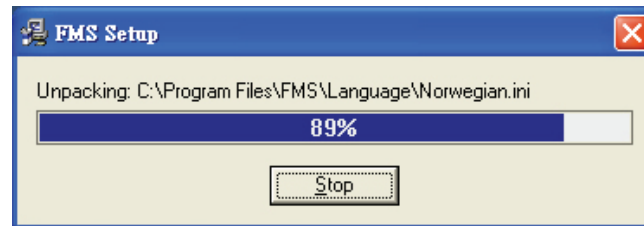
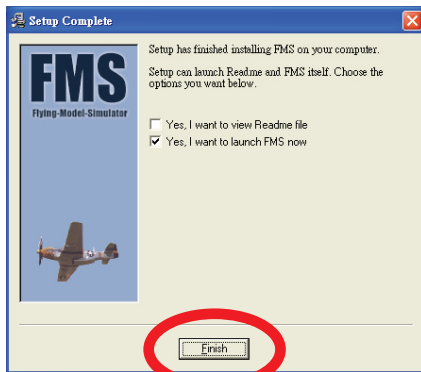
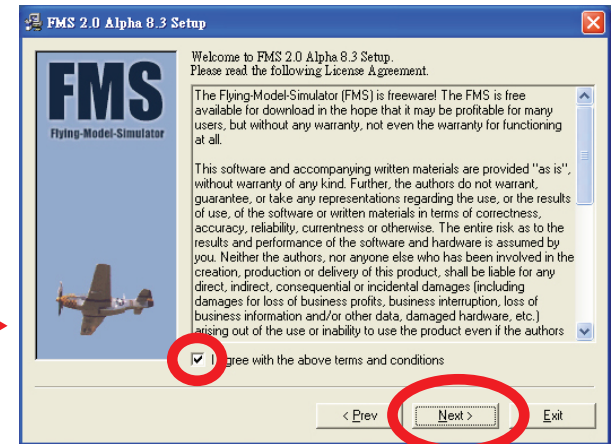
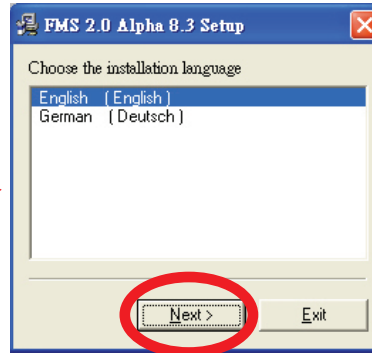
USB RC Flight Simulator

User Manual

1. Software Setup



1. Open **fms2alpha83.exe**



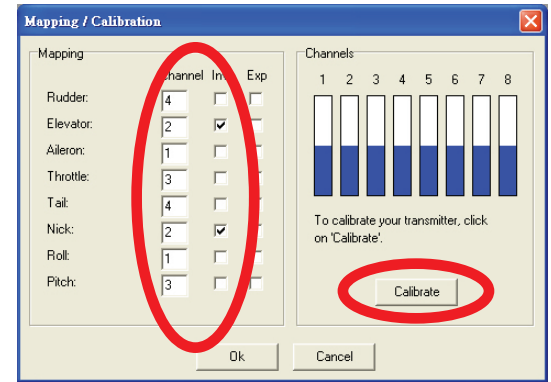
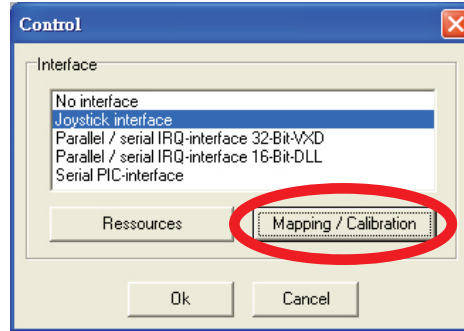
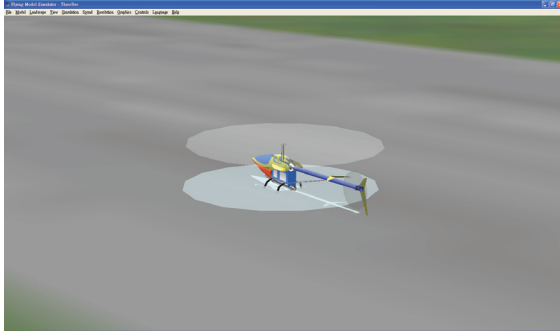
2. Connection with your computer

3. Select Language



4. Interface setup and calibration

1. Choose **Analog Control** from the **Controls** menu
2. Choose **Joystick Interface** in the pop-up window and click on **Mapping/Calibration**, then **OK**



3. Input the data and tick the box as shown in the illustration.

4. Before clicking **Next**, please move the sticks in accordance to the pictures shown below



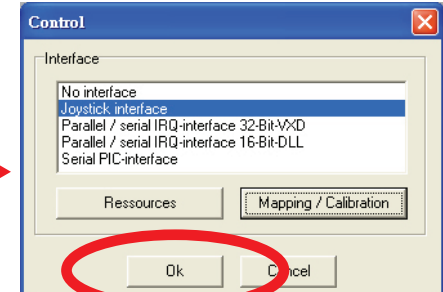
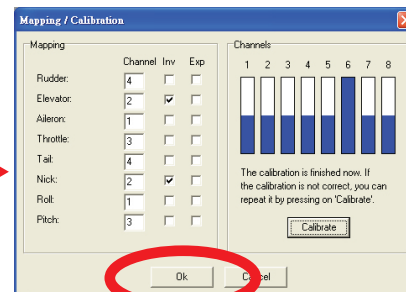
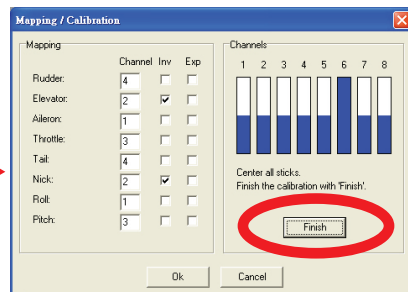
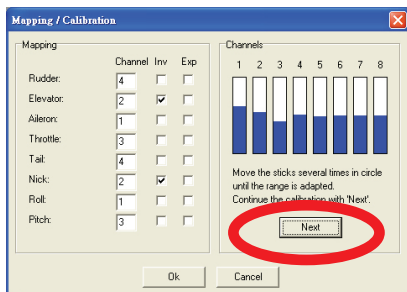
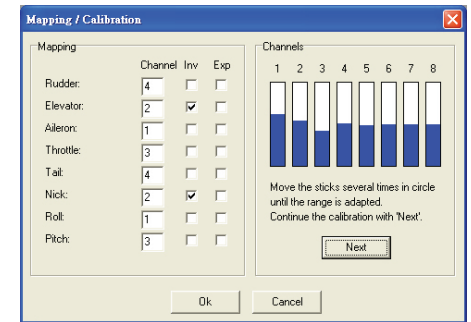
Replace the sticks at the centre position



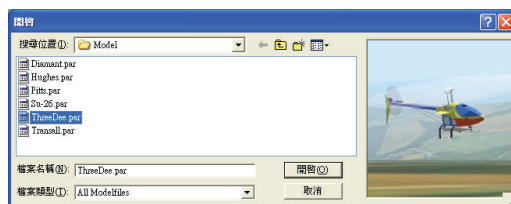
Move the sticks several times in circle



Setting the throttle trim down and center the rest of the trims.

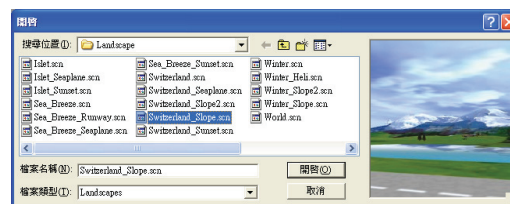


5. Select model type



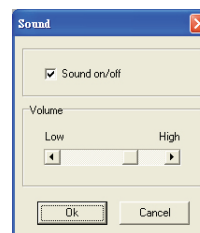
Select model by clicking on Model and choosing Load

6. Load flying landscape

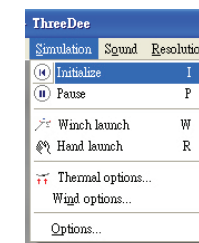


Select landscape by clicking on Landscape and choosing Load

7. Sound

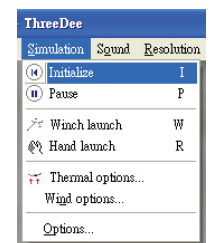


8. Restart



Keyboard shortcut key "i"

9. Pause



Keyboard shortcut key "p"